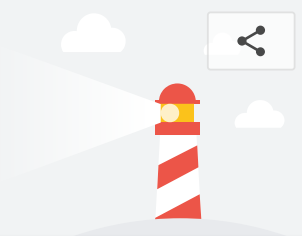


<https://speed.crlab.com.tw/>

Nov 19, 2018, 4:12 PM GMT+8

Emulated Nexus 5X, Unknown



Best Practices



Accessibility



SEO



Performance

Score scale: ● 90-100 ● 50-89 ● 0-49

## Best Practices



- 1 Does not use HTTP/2 for all of its resources 16 requests not served via HTTP/2 ▲ ▾
- 2 Uses `document.write()` ▲ ▾
- 3 Includes front-end JavaScript libraries with known security vulnerabilities 1 vulnerability detected ▲ ▾
- 4 Browser errors were logged to the console ▲ ▾
- ✔ **Passed audits** 11 audits ▾

## Accessibility



These checks highlight opportunities to [improve the accessibility of your web app](#). Only a subset of accessibility issues can be automatically detected so manual testing is also encouraged.

### ARIA Attributes Follow Best Practices

These are opportunities to improve the usage of ARIA in your application which may enhance the experience for users of assistive technology, like a screen reader.

- 1 `[aria-*]` attributes do not have valid values ▲ ▾

### Elements Describe Contents Well

These are opportunities to make your content easier to understand for a user of assistive technology, like a screen reader.

- 2 `<frame>` or `<iframe>` elements do not have a title ▲ ▾

- 🔍 **Additional items to manually check** 11 audits ▾
- ✔ **Passed audits** 19 audits ▾
- ⊖ **Not applicable** 14 audits ▾

## SEO



These checks ensure that your page is optimized for search engine results ranking. There are additional factors Lighthouse does not check that may affect your search ranking. [Learn more](#).

### Content Best Practices

Format your HTML in a way that enables crawlers to better understand your app's content.

- 1 Document does not have a meta description ⚠️
- 🔍 **Additional items to manually check** 2 audits
- ✅ **Passed audits** 9 audits
- ⊖ **Not applicable** 1 audits

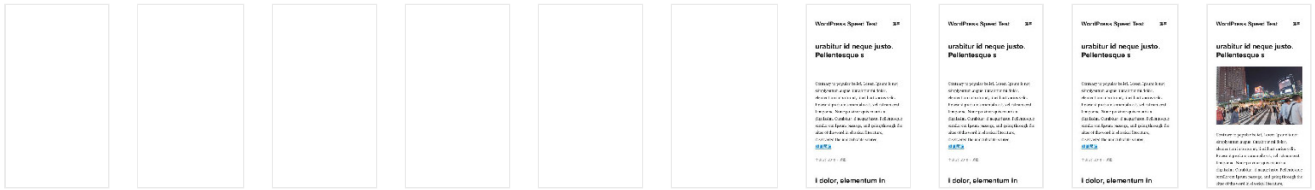
### Performance

#### 🕒 Metrics



First Contentful Paint	1.8 s	✅	First Meaningful Paint	1.8 s	✅
Speed Index	5.0 s	ⓘ	First CPU Idle	4.6 s	ⓘ
Time to Interactive	5.1 s	ⓘ	Estimated Input Latency	70 ms	ⓘ

Values are estimated and may vary.



#### 🔧 Opportunities

These optimizations can speed up your page load.

Opportunity	Estimated Savings
1 Serve images in next-gen formats	1.65 s
2 Efficiently encode images	0.3 s
3 Reduce server response times (TTFB)	0.18 s
4 Defer unused CSS	0.15 s

#### 📄 Diagnostics

More information about the performance of your application.

- 1 Ensure text remains visible during webfont load ⚠️
- 2 Serve static assets with an efficient cache policy 8 resources found ⓘ
- 3 Minimize main-thread work 3.0 s ⓘ
- 4 Reduce JavaScript execution time 1.6 s ⓘ
- 5 Minimize Critical Requests Depth 1 chain found
- ✅ **Passed audits** 13 audits

## Runtime settings

- **URL:** https://speed.crlab.com.tw/
- **Fetch time:** Nov 19, 2018, 4:12 PM GMT+8
- **Device:** Emulated Nexus 5X
- **Network throttling:** Unknown
- **CPU throttling:** Unknown
- **User agent (host):** Mozilla/5.0 (X11; Linux x86\_64) AppleWebKit/537.36 (KHTML, like Gecko) HeadlessChrome/72.0.3603.0 Safari/537.36
- **User agent (network):** Mozilla/5.0 (Linux; Android 6.0.1; Nexus 5 Build/MRA58N) AppleWebKit/537.36 (KHTML, like Gecko) Chrome/71.0.3559.0 Mobile Safari/537.36
- **CPU/Memory Power:** 698

---

Generated by **Lighthouse** 4.0.0-alpha.0 | [File an issue](#)